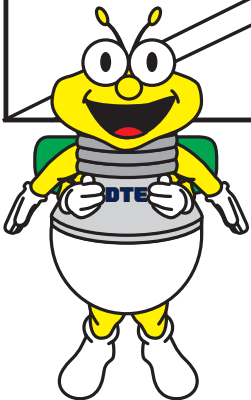
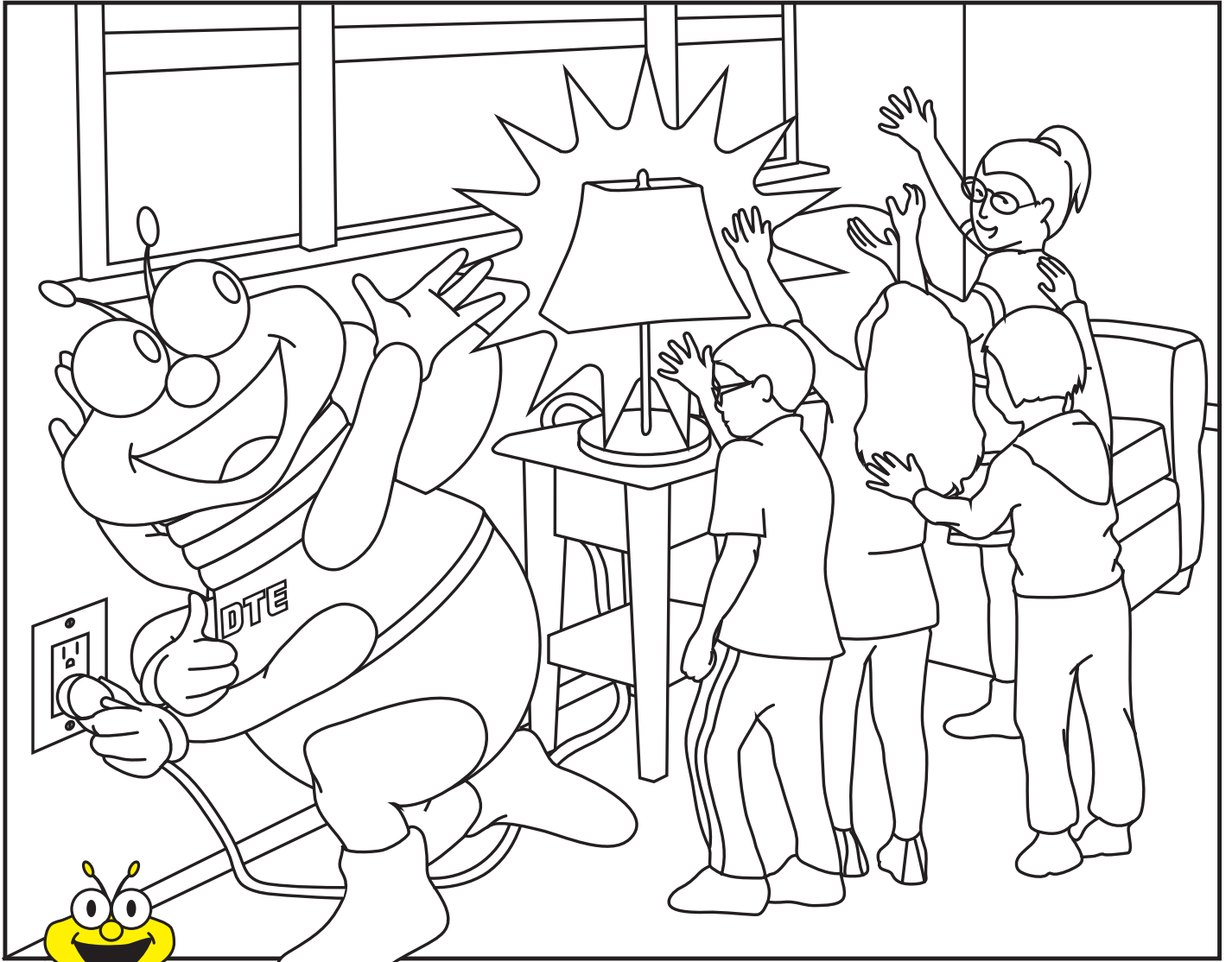


Let's learn about

Electricity!

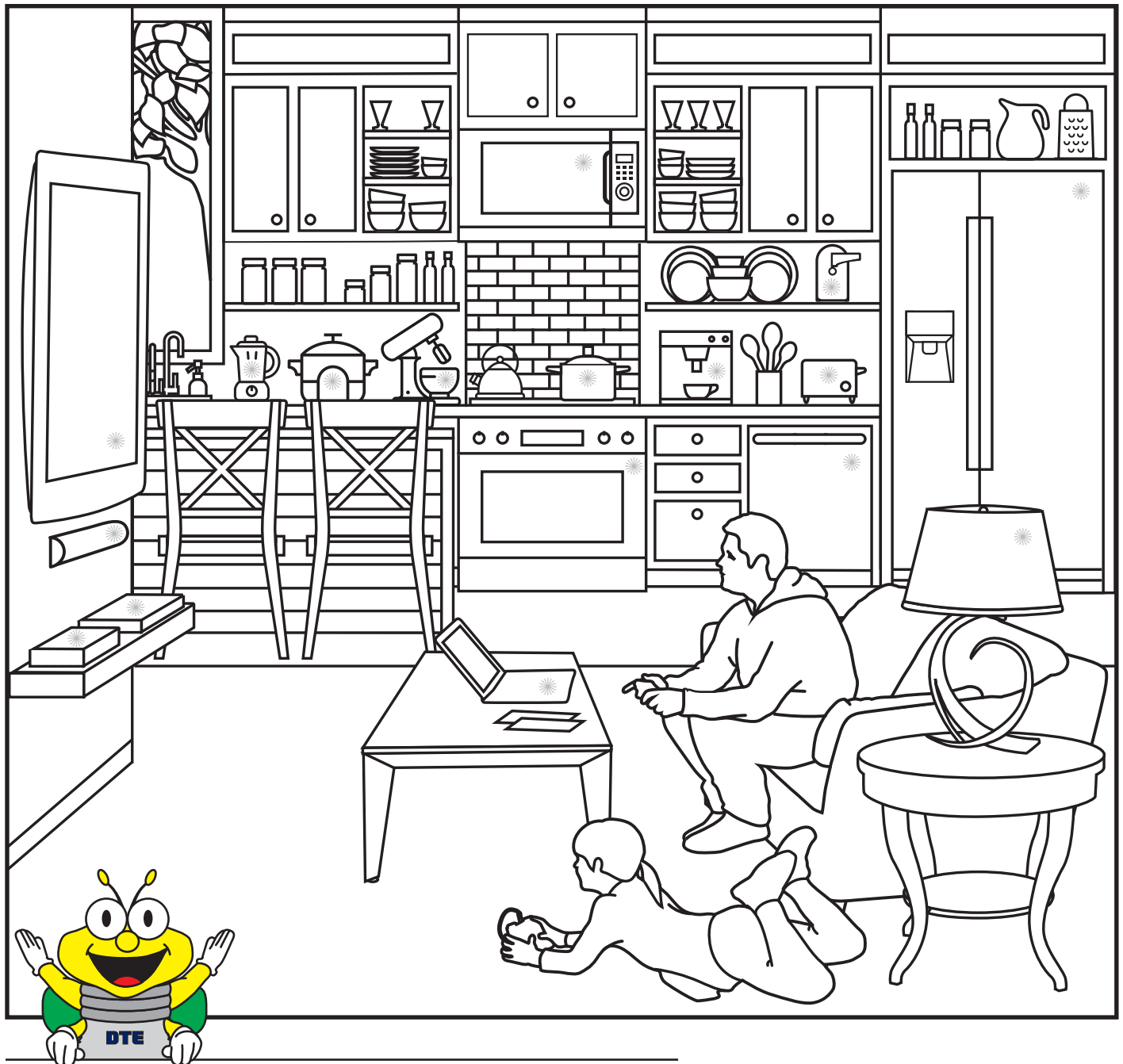


This book belongs to: _____



What is Electricity?

Electricity is what energizes our everyday lives! It lights up our houses, powers our TVs, helps cook our food and so much more! Can you locate all the objects that use electricity?



Circle all objects that are being powered by electricity. Once you think you've circled them all, check your answers, and color in the picture!

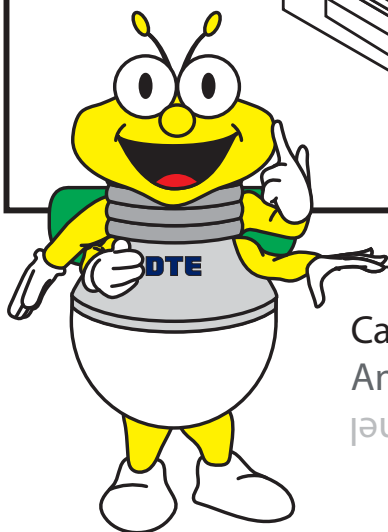
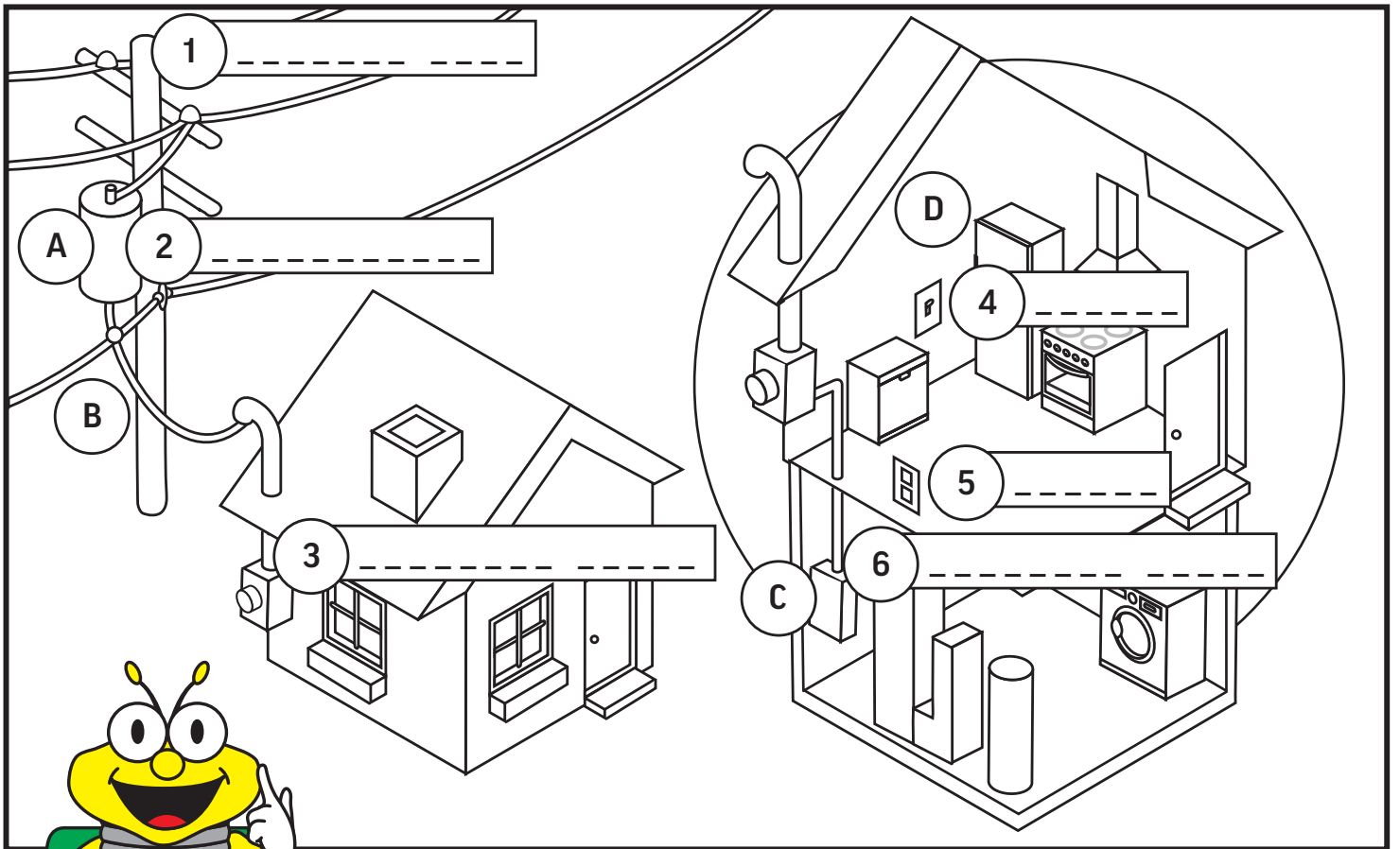
Answers:

1. game console
2. cable box
3. tv
4. soundbar speaker
5. lamp
6. laptop
7. refrigerator
8. dishwasher
9. range
10. microwave
11. electric can opener
12. toaster
13. coffee maker
14. mixer
15. slow cooker
16. blender

An Electric Journey!

Have you ever wondered how flipping a switch magically turns on your lights? Or, how one click of a button can turn on your tv? It's all thanks to electricity! Electricity goes on a journey from the energy company, all the way to your house! Here's how it works:

- A** Electricity flows from **overhead power lines**, or **underground power lines**, through a **transformer** where the voltage is reduced.
- B** It then travels through smaller wires to your home's **electric panel**.
- C** This panel controls the electricity in your entire house!
- D** From the panel, electricity then flows to all the **switches** and outlets throughout your home, and finally through a **power cord** where it powers your **appliances**!



Can you use the highlighted words above to fill in all the blanks?
Answers:

- 1. Utility pole
- 2. Transformer
- 3. Electric meter
- 4. Switch
- 5. Outlet
- 6. Electric panel

Safety Check!



Identify the safety hazards by placing the scenario number in the proper box.

- 1 Electrical outlets are not toys. Plugging in too many cords into one outlet can cause electrical damage or even start a fire! Also, never stick your finger or any other object in the outlet to avoid getting shocked!
- 2 Water and electricity don't mix! Make sure to never touch anything electrical if you are wet or in water.
- 3 Power lines run high above the trees, but can sometimes fall to the ground. If you ever see one, stay at least a school bus distance away at all times and never walk through any taped off areas.
- 4 Never play outside during a storm. Severe weather creates a lot of safety hazards and lightning can be deadly!
- 5 When you're outside, make sure not to fly your kite or toys too close to power lines.

Who's being safe... and who's not?

Downed power lines can buzz and spark, or lay quietly on the ground. Either way, never touch a downed line or anything it is touching.



Water conducts electricity. That means you should never touch any electric device while wet or standing in water.



Climbing trees can be a popular summer activity, but you should always be aware of your surroundings. If a tree is close to power lines, it is off limits for climbing.

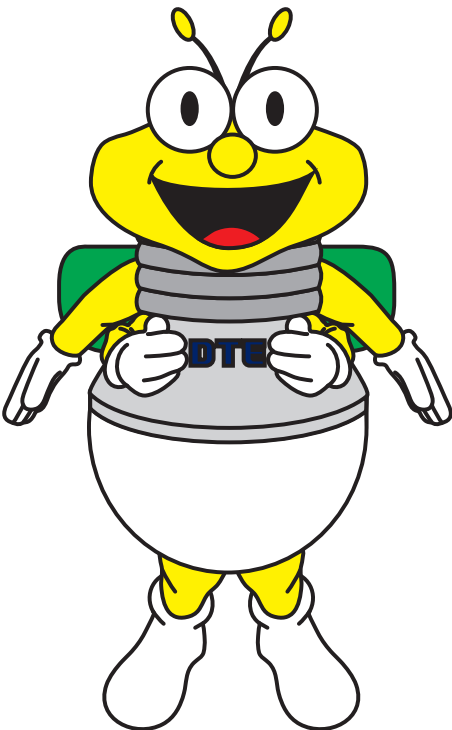


Safety hazards can happen at anytime and anywhere. How good are you at identifying safety hazards? Place a ✓ under the safe scenario and a ✗ under the safety hazard.

Answer:

✗	✓
✓	✗
✓	✗
Right	Left

What's the word?



Use the pictures to figure out each unscrambled word and write it on the line!

1. sbulohcos _____

2. ierw _____

3. terlceci _____

4. zahard _____

5. glup _____

6. oltute _____

1. school bus 2. wire 3. electric 4. hazard 5. plug 6. outlet

Answers:

Keep your home safe!

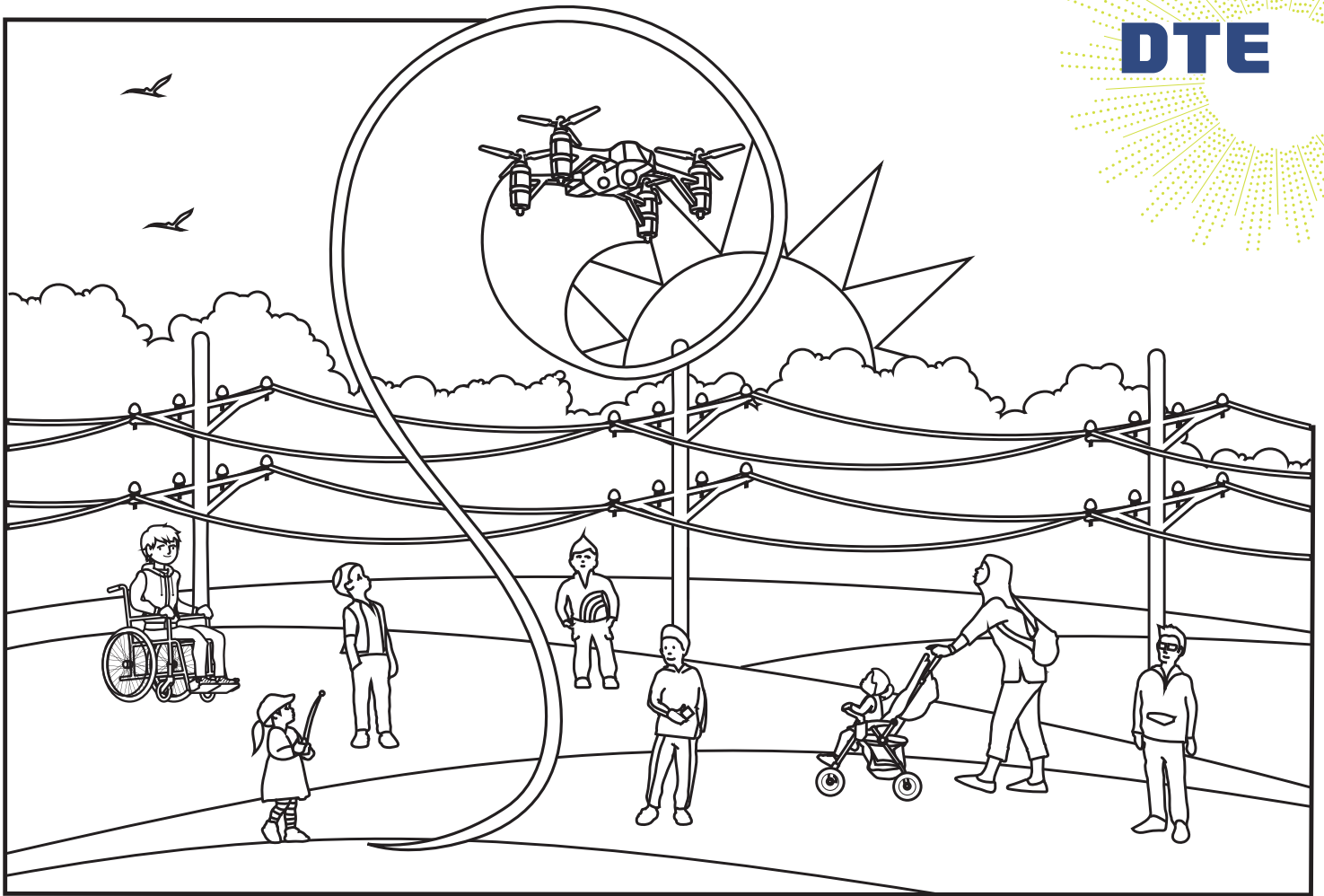
Draw a line between the picture of electrical equipment and the word that matches.



- Electrical outlets
- Electric cords
- Fire extinguisher
- Smoke alarm
- Electric appliances

Once you identify what common electrical equipment looks like, grab a parent and make sure all the equipment is safe in your home! Mark on checklist.

- Electrical outlets are not overloaded.
- Electric cords are in good condition. Not frayed, damaged or exposing any wires.
- Electric cords are not in the way of walking paths.
- All electric appliances are being used away from water.
- A fire extinguisher is kept in a convenient place.
- Your smoke alarm is working.
- Any electric appliances that can get hot like a toaster, space heater, lightbulb, etc. are kept away from objects that can catch fire.



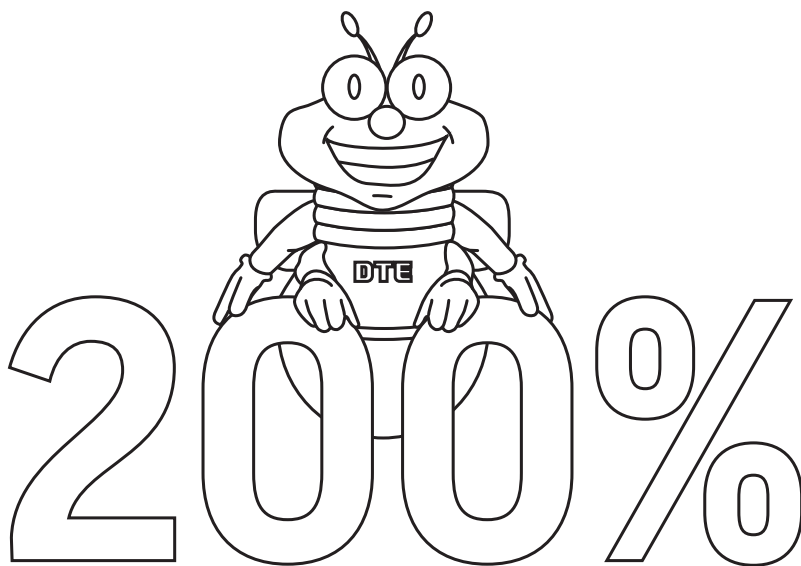
Be safe and share what you have learned
with family and friends!



Take the safety pledge!



I pledge to be **200%** accountable for myself and others around electric safety hazards.



Electric Safety Tips:

- Always stay at least a school bus distance away from downed power lines. If you do see a power line on the ground, tell an adult and have them immediately notify DTE.
- Never climb a tree that is close to any power lines or play near any electrical equipment.
- Keep anything that uses electricity away from water at all times.
- Don't plug too many cords into one outlet. It could cause electrical damage or even cause a fire.
- Always go inside during storms. Severe weather and lightning can be extremely dangerous.

Name: _____

