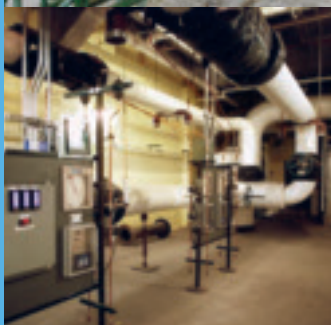


# DTE Energy businesses

utility	<p><b>DETROIT EDISON</b></p> <p><b>Electric Power Generation</b> – Generate approximately 11,000 MW of power from nine fossil-fuel plants, one nuclear plant, a hydroelectric facility and 85 peaking generators in Michigan.</p> <p><b>Electric Power Distribution</b> – Own and operate approximately 660 distribution substations, maintain 44,000 miles of power lines and nearly 1 million utility poles, supplying electricity to 2.1 million customers in southeastern Michigan.</p> <p><b>MICHCON</b></p> <p><b>Gas Distribution</b> – Provide gas sales and transportation delivery services to 1.2 million residential, commercial and industrial customers throughout Michigan. MichCon owns and operates 295 storage wells representing more than 5 percent of the nation’s gas storage capacity.</p>
non-utility	<p><b>POWER AND INDUSTRIAL PROJECTS</b></p> <p>Provide on-site energy services for large industrial customers in the auto, steel, and pulp and paper industries; steel-related projects such as synfuel and coke production, and pulverized coal injection; power generation with value-added services; and waste coal recovery projects.</p> <p><b>UNCONVENTIONAL GAS PRODUCTION</b></p> <p>Own interest in 22 percent of Michigan Antrim shale well production; lease almost 50,000 acres in Texas, with test drilling of the Barnett shale under way; and own and operate 29 landfill gas recovery sites in 12 states.</p> <p><b>FUEL TRANSPORTATION AND MARKETING</b></p> <p>Provide coal supply and transportation-related services across North America; own 40 percent interest in Vector pipeline and 10.5 percent interest in proposed Millennium pipeline; own or operate 70 Bcf of non-utility storage assets in Michigan; offer a full line of products and services to help manage energy purchase, generation and delivery.</p>



*From top: Belle River Power Plant, Mich.; Custer Wellhead, Mich.; Renaissance Center on-site services, Detroit, Mich.; biomass site, Riverview, Mich.; rail services facility, Hastings, N.C.*