

EXPERIMENTAL ELECTRIC VEHICLE RATE D1.9**1. General**

This rate is available to *residential* customers through special agreement with Detroit Edison. For details please consult the Rate Book, Rate Schedule NO. D1.9

This separately metered rate is approved for permanently installed (permanently hard-wired) electric vehicle charging stations.

2. Customer Responsibilities.

The customer must contact Detroit Edison PEV Hotline at 313-235-7700 to apply for Rate D1.9 and **obtain approval prior to start any work.**

Customer's contractor will supply and install the necessary meter enclosures, wiring and all necessary equipment needed to provide separate metering for this rate. Control equipment such as timers is also the responsibility of the customer. GFCI protection, conductor sizing and ventilation requirements for electric vehicle charging equipment are also the responsibility of the customer or contractor.

3. Detroit Edison Responsibilities.

- **Customer Marketing** to approve the customer proposed service change and the metering equipment location and connection (layout and conductor size).
- **Electric Field Operations** will install the meter when the customer has met the necessary wiring requirements and **passed the local electrical inspection.**

4. Wiring Specifications.

- (a) The meter enclosure assembly diagrams (7-14-3) for the Residential Rate D1.9 show typical methods for separate meter installations. For acceptable metering enclosures (single/multiple positions) see ESIG (SIM) section 5-8.
- (b) It is the customer's responsibility to furnish the meter enclosure.
- (c) The interconnection between the Residential meter and the Rate D1.9 meter must be sized to serve the current requirements of the customer's connected load. In any case, the minimum size acceptable is #8 AWG copper or equivalent.
- (d) For **Rate D1.9** the contractor will connect the service to the **load** side of the Residential Service meter leaving enough wire slack to easily reach the line terminals. Detroit Edison personnel will move the conductors to the **line** side when the installation is accepted for service.

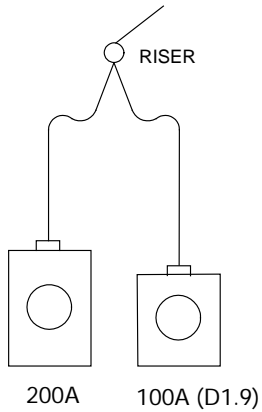
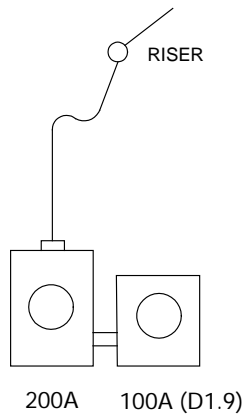
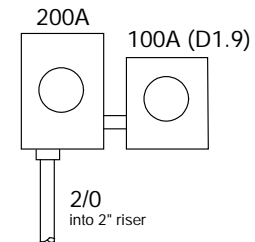
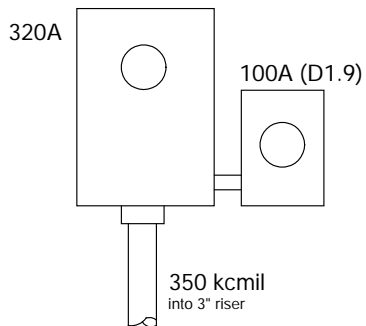
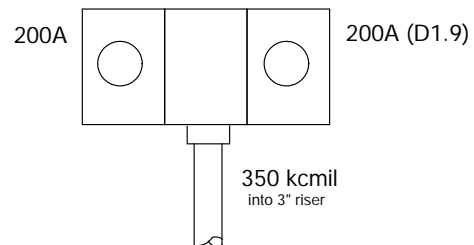
Exceptions to Load Side Connection:

1. Supply of the Rate D1.9 from a separate service riser or from connection to service conductors in a sealable trough.
 2. Interconnect conductor size #4 AWG and larger will be connected to the line side terminals of the Residential Service meter box by the contractor.
 3. New service that has not been energized.
 4. If the Rate D1.9 service must be interconnected to an interruptible rate meter, the connection will be to the load side of that meter until Detroit Edison personnel move that connection to the line side terminals and install the meter.
- (e) Conductor metal must be compatible with the line side conductors, even though the temporary connection will be to the load side (Al to Al or Cu to Cu).
- (f) The Rate D1.9 service disconnect and distribution panel will be separate from the customer's regular service disconnect and distribution panel and must comply with the requirements of the *National Electrical Code*.
- (g) If there are multiple space conditioning units, water heaters or electric vehicle charging circuits, Detroit Edison Service Planning will approve the conductor size to properly connect all load to the residential meter.
- (h) All wiring must comply with the requirements of the *National Electrical Code*.
- (i) It is the customer responsibility to contact Detroit Edison Customer Service (800-477-4747) and report that work is being scheduled and the meter enclosure seal will be broken.
When the connection is made to the line side and jumpers are installed, Detroit Edison will be notified immediately that the installation is unmetered.

EXPERIMENTAL ELECTRIC VEHICLE RATE D1.9,

METER LAYOUTS AND CONNECTIONS

The customer must contact Detroit Edison Service Planning to apply for Rate D1.9 and **obtain approval prior to start any work.**

DETAIL ADETAIL BDETAIL CDETAIL DDETAIL E**NOTES:**

1. Detail A: Limited to maximum 3 taps per Service Drop,
2. Details B, C, D, or E: Maximum one additional meter enclosure on each side of Residential meter,
3. All applicable clearances shall apply.
4. D1.9 is available as 200A service for configurations shown above as Details A thru D. Contact Detroit Edison Service Planning to validate Service Drop conductor size.

THE DETROIT EDISON COMPANY ASSUMES NO RESPONSIBILITY FOR INJURY OR DAMAGE ARISING FROM THE USE OF THIS SPECIFICATION DIAGRAM.