



Huron County Wind Project

DTE Energy has been working with landowners in Huron County since early 2007 to acquire wind development rights for future construction and operation of wind farms. As of June 2009, DTE Energy has acquired wind development rights to over 70,000 acres of land in Michigan's Thumb region.

We are sensitive to landowner and community needs, and will continue to meet with local planning commissions, zoning boards, community groups, and landowners throughout this process.

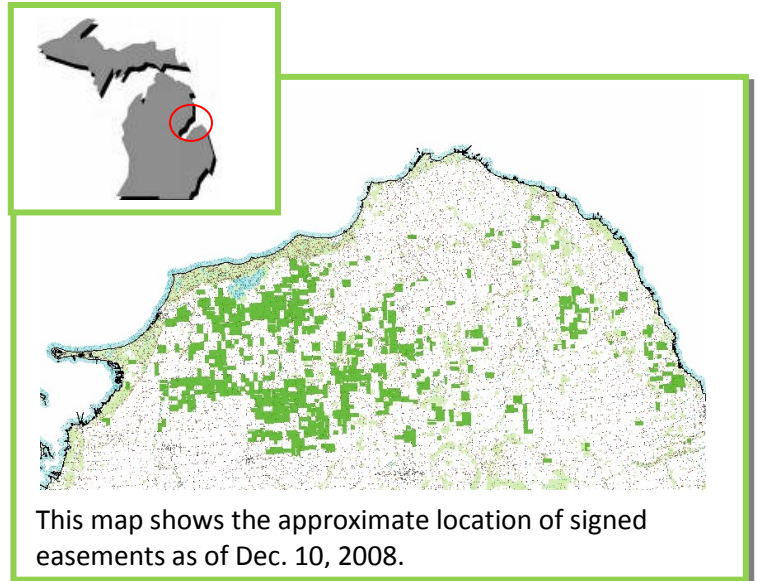
Wind Farm Size and Scope

Our first wind farm in Huron County is planned to be about 55 MW. If 2MW turbines are used, this would be about 25 wind turbines on about 3,100 acres generating 130,000 MWh per year.

Turbine Specifications

A turbine vendor has not yet been selected. We will most likely install 2MW turbines.

The cost of wind turbine and the installation is estimated at about \$4 million per unit. If 35 wind turbines are installed it will represent a \$130 million investment.



This map shows the approximate location of signed easements as of Dec. 10, 2008.

The Development Process

We are projecting to break ground in Huron County in 2011. Once begun, construction of the access roads, turbines, and related facilities will take about 9 months. If we are able to accelerate that timetable, we will do so, consistent with the Clean, Renewable and Efficient Energy Act (PA 295) of 2008, regulatory requirements and other relevant considerations.

Gathering Data – Wind Speed

We installed six (6) meteorological monitoring stations (METs) in Huron County in 2007 to confirm wind speeds and other conditions. Wind measurement data will be gathered from the METs for 2 years.

During that time, we'll also evaluate potential impacts such as noise and site lines, research zoning requirements and perform site selection activities, conduct wildlife studies, and assess electrical system capacity.

Gathering Data – Wildlife Impacts

We are balancing the need to meet Michigan's energy demand for clean, renewable power with the need to protect local and migrating wildlife. We are conducting extensive studies of bird and bat migration patterns and habitats. We have been working with Applied Ecological Services out of Minnesota since spring 2007 to perform bird and bat studies in the targeted areas.



Siting the Equipment

In general, turbines are typically placed no closer than about 800 feet side to side (perpendicular to prevailing winds), and about 2,000 feet front to back (parallel to prevailing winds) to maximize the wind flow across the blades. Due to multiple setback requirements (e.g. roads, homes, wildlife, etc.), turbine placement will likely vary to some extent.

Huron County's wind ordinance generally limits wind turbine noise to 50 dBA for no more than 10% of any hour, for any existing residence, school, hospital, etc. The Huron County ordinance requires a setback of two times turbine hub height or 1,000 feet – whichever is greater – from homes. The county also requires a road setback equal to 1.5 times the turbine hub height or 400 feet, whichever is greater. A modern operating wind turbine, at a distance of 800-1,000 feet, is no louder than a kitchen refrigerator.

Landowner input and advice will be solicited and considered during the siting process.

Financing

The Clean, Renewable and Efficient Energy Act (PA 295) of 2008 authorized the implementation of a renewable energy surcharge to partially fund the development and construction of renewable energy resources in Michigan. These fees will be instituted in September 2009. Residential fees approved by the Michigan Public Service Commission (MPSC) are \$3 per month, per meter. The company's retail electric rates are regulated by the MPSC.

Detroit Edison has developed energy efficiency programs for customers so that savings from these measures will likely offset cost increases resulting from renewable energy requirements. Consequently, total energy costs should remain roughly the same.